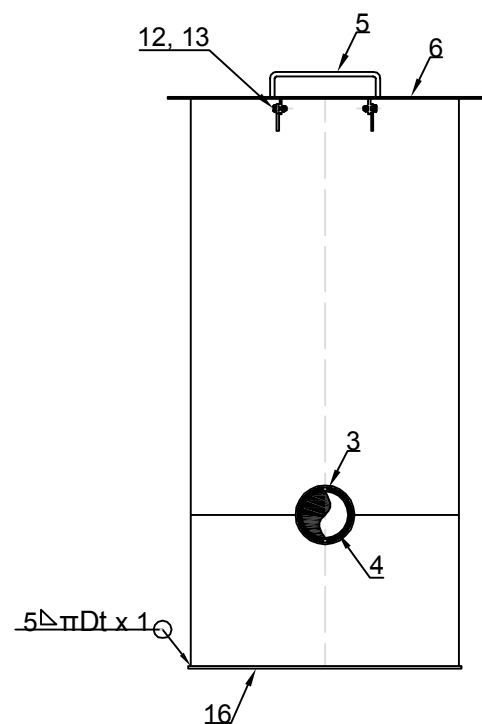
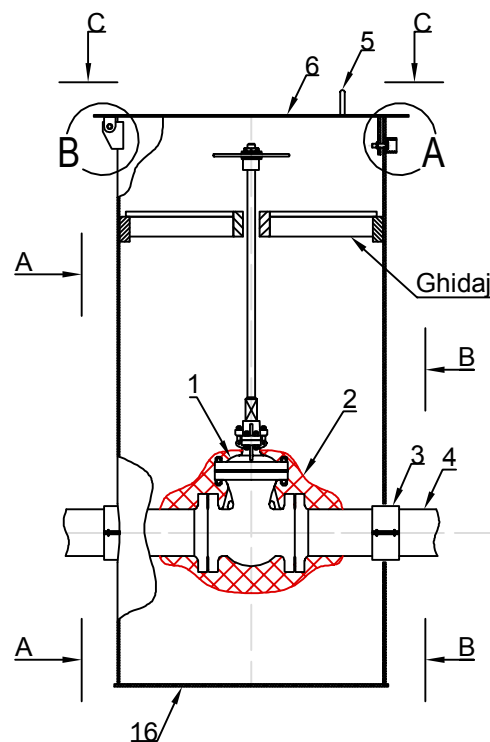


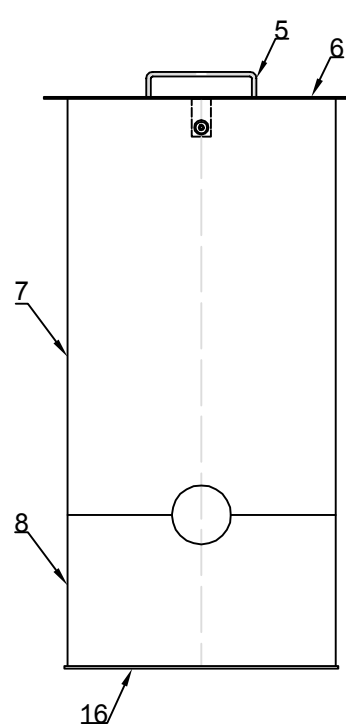
Vedere A - A



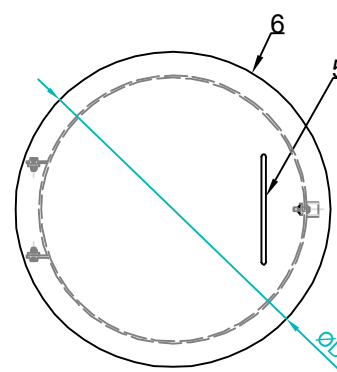
Detaliu izolare ventil si montaj tub protector



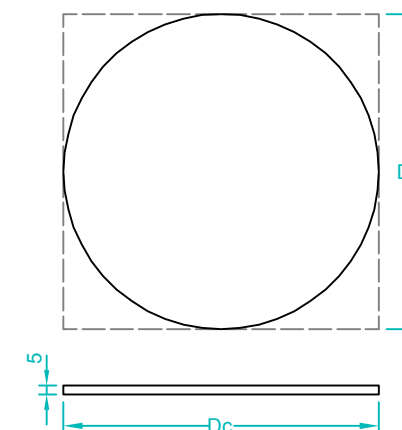
Vedere B - B



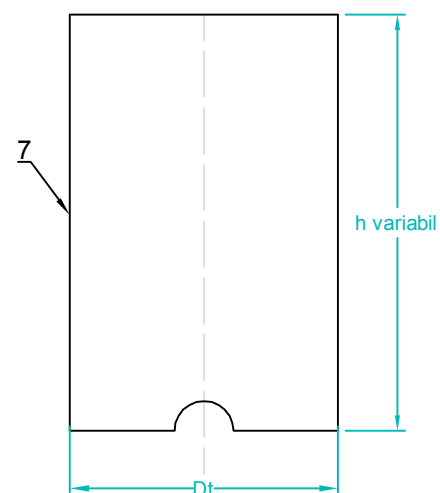
Vedere in plan C - C



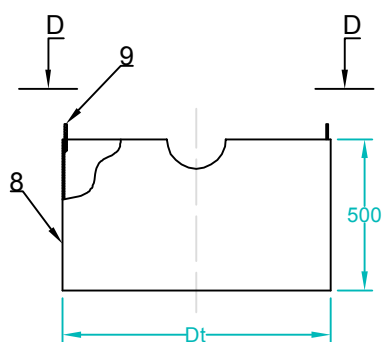
Detaliu "6"



Detaliu tub superior "7"

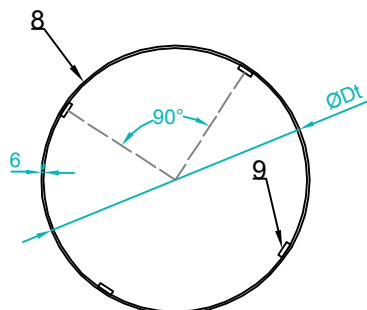


Detaliu tub inferior "8"

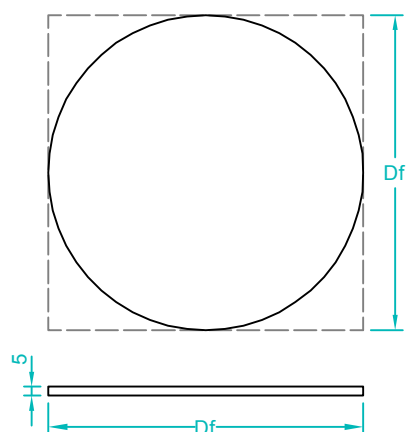


NOTA:  
Protectia anticoroziva a caminului se va face prin vopsire conform SR EN ISO 12944:2002  
- doua straturi grund epoxidic cu Zn, cu grosime totala strat uscat 75 - 80  $\mu$ m;  
- vopsea epoxidica clorcauciuc in doua straturi.

Vedere D - D



Detaliu "16"



Dimensiuni tub protector				
DN ventil	Dt	Grosime tub [mm]	Dc	Df
250	813	7.1	885	885

Poz.	Denumire	Dimensiuni	STAS	Material	Cantita
1	Robinet cu sertar pana	DN 250		A216 + 13Cr	
2	Mastic izolator		KEBU PLAST MASTIC		
3	Inel distantier			MDPE	2
4	Teava		SR EN ISO 3183/2013	L 360N	
5	Maner	$\varnothing 12 \times 400\text{mm}$	SR EN 10060:2004	OL 37.2K	1
6	Capac	Tb. 5mm	SR EN 10029:2011	OL 37.2K	1
7	Manta camin superioara	$\varnothing Dt \times 7.1$	SR EN ISO 3183/2013	L 245N	
8	Manta camin inferioara	$\varnothing Dt \times 7.1 \times 500\text{mm}$	SR EN ISO 3183/2013	L 245N	
9	Platbanda ghidare tub	100 x 40 x 5mm	SR EN 10058:2004	OL 37.2K	4
10	Protector surub	$\varnothing 1 \frac{1}{2}'' \times 3.6 \times 30\text{mm}$	STAS 8185:88	OLT 45	1
11	Tabla groasa	100 x 50 x 6mm	SR EN 10058:2004	OL 37.2K	1
12	Surub	M10 x 50	SR EN ISO 4018:2011		3
13	Piulita	M10	SR EN ISO 4034:2013		3
14	Tabla groasa	70 x 55 x 6mm	SR EN 10058:2004	OL 37.2K	2
15	Tabla groasa	40 x 30 x 6mm	SR EN 10058:2004	OL 37.2K	2
16	Fund camin	Tb. 5mm	SR EN 10029:2011	OL 37.2K	1

GREUTATE CAMIN IN FUNCTIE DE INALTIME										
Greutate capac camin [Kg]	30.74	30.74	30.74	30.74	30.74	30.74	30.74	30.74	30.74	30.74
Greutate fund camin [Kg]	30.74	30.74	30.74	30.74	30.74	30.74	30.74	30.74	30.74	30.74
Greutate tub pe ml [Kg]	141.0	141.00	141.00	141.00	141.00	141.00	141.00	141.00	141.00	141.00
H [m]	1.50	2.00	2.50	3.00	3.50	4.00	4.50	5.00	5.50	6.00
Greutate [Kg]	283.98	354.48	424.98	495.48	565.98	636.48	706.98	777.48	847.98	918.48

Verificator/Expert	Nume	Semnatura	Cerinta	Referat / Expertiza Nr. / Data

S.C. SNIF PROIECT S.A. Targoviste Numar de inmatriculare J15/925/2005				Beneficiar: CONPET S.A. PLOIESTI		Pr. nr. 344/2017
Specificatie	Nume	Semnatura	Scara:	"Punere in siguranta subtraversare nr. 2 conducta de $\varnothing 10 \frac{3}{4}''$ Potlogi - P.F. Arges, rau Sabar, loc. Gaiseni, jud. Giurgiu pe o lungime de 350m"		Faza PT+CS+D
Sef proiect	Ing. Costea Paul					
Desenat	Ing. Radu Florin		Data: 2017	Detaliu izolare ventil si montaj tub protector		Pl. nr. 25.2
Proiectat	Ing. Costea Paul					